



Xian SNMP Device Simulator v5

Remove the roadblocks.
You'll never lack available
network devices



Features

- ▶ Install and create a virtual network swiftly
- ▶ Simulate any network device
- ▶ Run 1,000+ simulated devices from a single or multiple machines
- ▶ Run dynamic or historical simulations
- ▶ Create IP addresses from the simulator console
- ▶ Simulate devices using scripts
- ▶ Save simulation configurations

The Jalasoft's SNMP Device Simulator v5, is an easy to install and use application that gives you the power to dynamically simulate any SNMP device you need.

If you have to test your network or the SNMP tools you use to run it, you know that having the right devices at the right time is harder than the actual testing. Is your network heavily secured or too isolated for testing? Do you need to test a specific device for real world activity? Do you need a test lab with 1000 or more devices? No problem. We have your solution.

Jalasoft's SNMP Device Simulator V5, removes these challenges and lets you execute dynamic simulations for any network device.

Fast. Efficient. Easy.

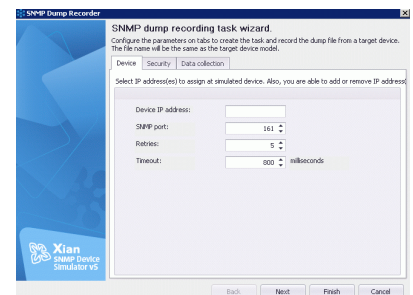
Create a virtual network device in seconds

Do you need to create a virtual network device for yesterday? The SNMP Device simulator has you covered! The easy to use wizard and interface let you bring a simulated device online in less than a minute. Choose the device that you want to create, select the type of simulation, give it an IP address and press finish.

Changes in V5 allow you to run more than 1,000 simulated devices at one time from a single machine. Need more devices? Deploy the SNMP Device Simulator agents on different computers and manage them through a single console.

Simulate any network device through the Device Recorder feature

Ideal for testing with network devices that you don't have in your test lab, the Device Recorder lets you mimic the behavior of any real SNMP device. Use the new Device Recorder feature to capture real world data from any desired device and simulate the selected behavior as many times as needed, without putting your production network at risk.



Try the **SNMP Device Simulator v5**, guaranteed that you'll love the results!



Dynamic Simulation

The SNMP Device simulator grants users the option to perform a dynamic simulation or a normal simulation (the most basic type).

The simulator uses a variety of formulas and statistical operations to generate dynamic values on the selected virtual devices, resulting in more realistic behavior. These values are also recorded on log files so they can be used later in the historical simulation mode.

Historical Simulation

Use the logs generated in a dynamic simulation to reproduce a precise behavior during a specific timeframe. With the Historical Simulation feature you can reproduce identical scenarios over and over again to make changes to your tools, monitoring software or network configuration. This feature is ideal for tests that depend on identical data in changing environments.

IP Address Manager

This feature is a time saver that you'll love! Imagine that you need to simulate 100 devices. With the IP Address Manager you no longer have to worry about manually creating IP addresses for all these devices. Instead, create individual IP addresses or a range directly from the simulator's console, and assign them to the devices that you need to simulate.

Generate simulated devices from scripts

You can access almost all V5 features without ever opening the console but just a command prompt. This includes creating a new simulated device, loading recorded data to a device and stopping/starting device simulations. Save valuable time through automation and scripts!

Save simulation configurations

Need to create a simulation for your network switches? They are all the same model, but the ones in R&D are configured differently from the ones in Accounting. No problem. Using our templates as a base, load the base data, make the changes needed to match your environment and then save the custom configuration with one for "Switch – R&S" and one for "Switch – Accounting". With the Save Configuration features, your customizations are waiting for you the next time you do a test or an audit.

Requirements

- ▶ Windows server 2003 or higher or Windows XP or higher
- ▶ .NET Frameworks 4.0 or higher

