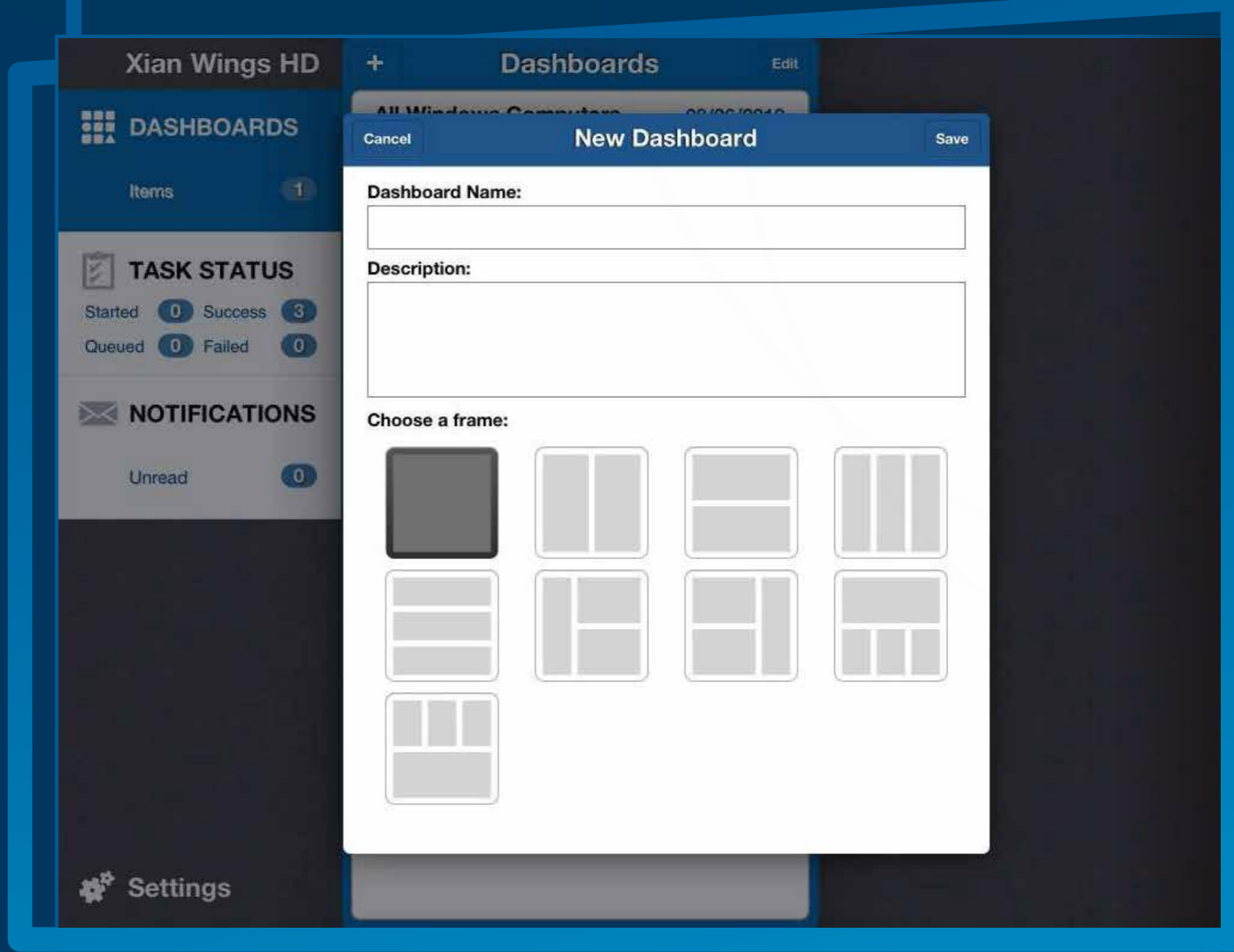
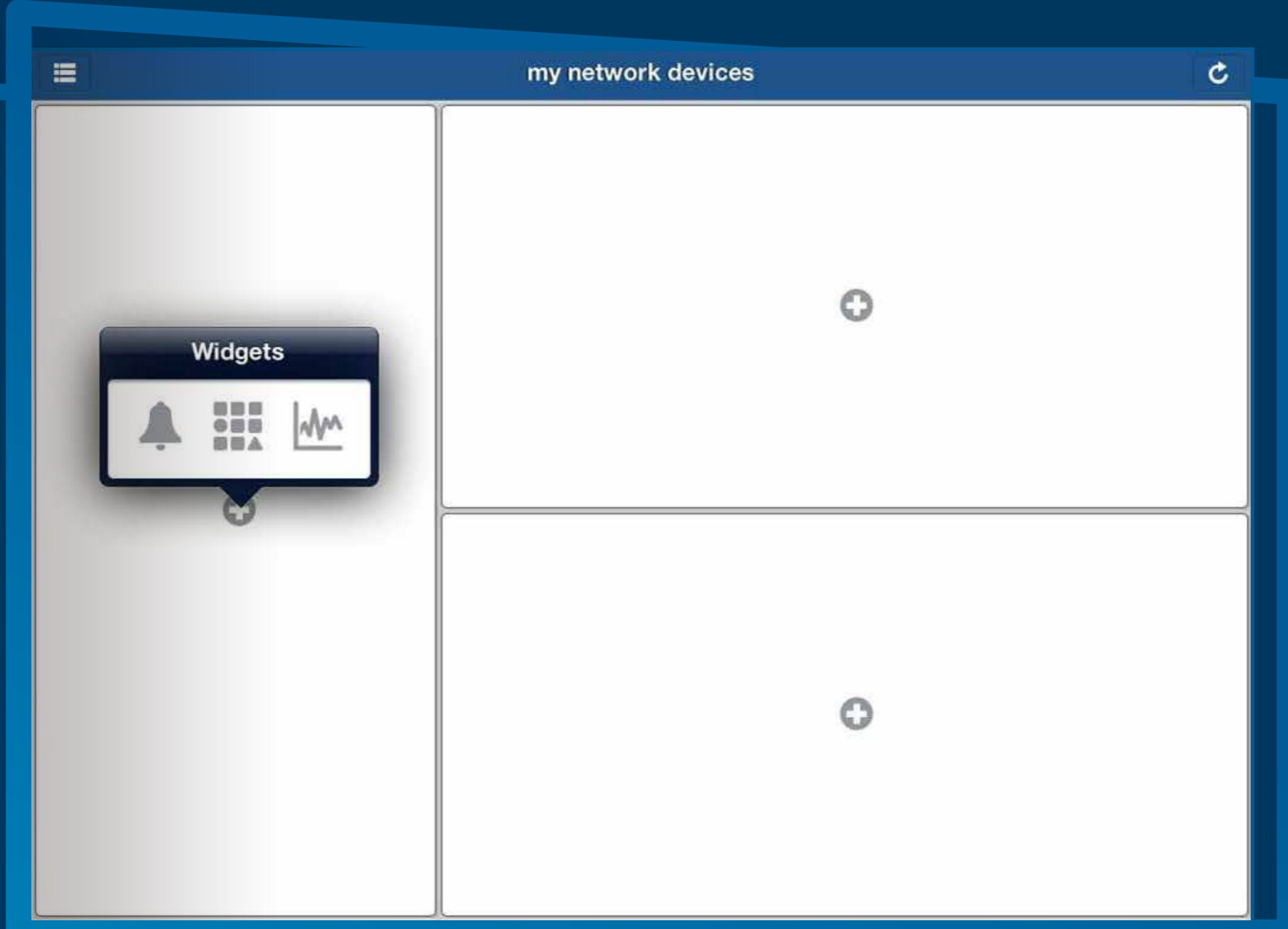


## Creating a dashboard on Wings HD

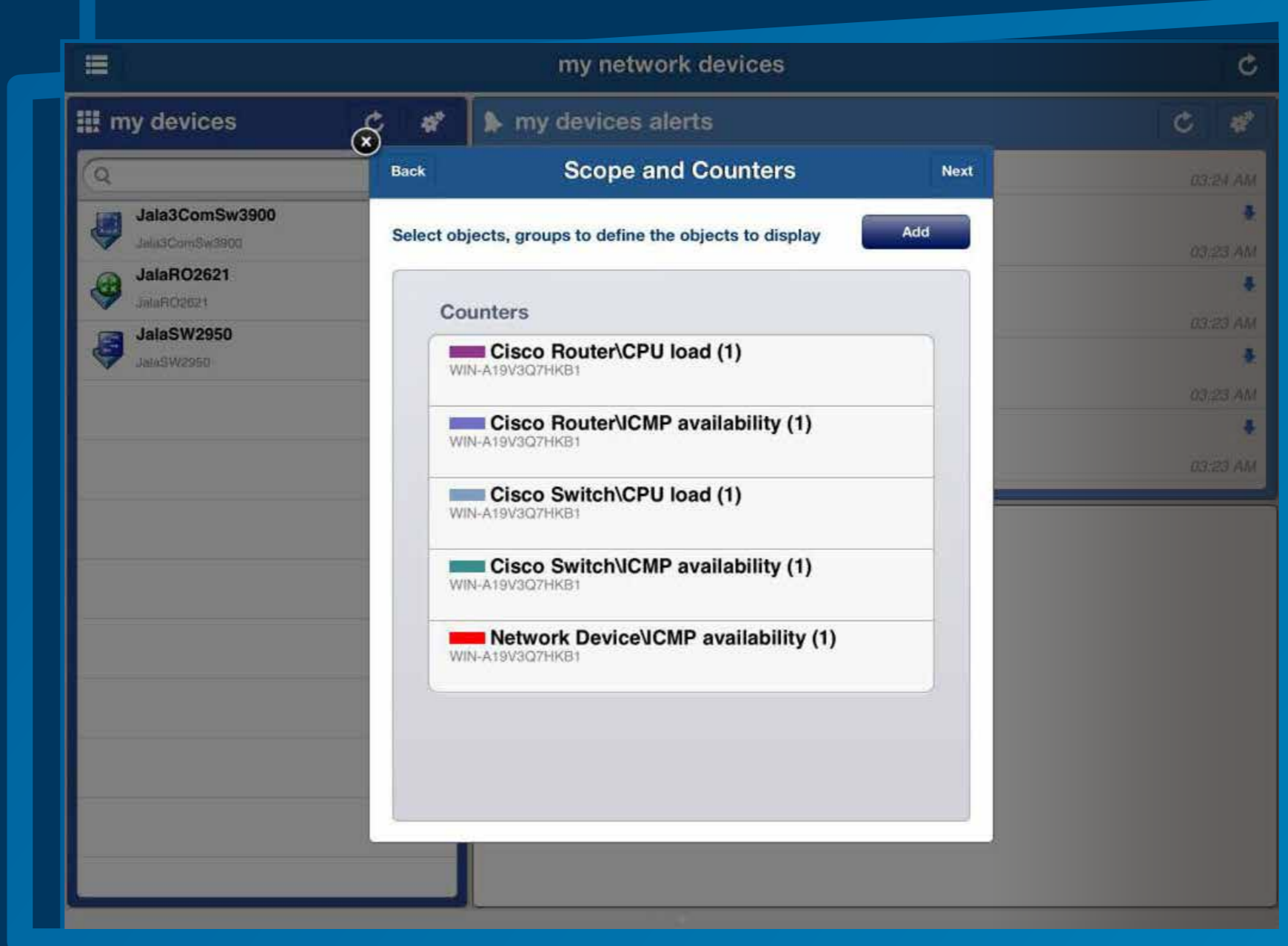
- 1 Create a new dashboard with the frame of your choice in a heartbeat.



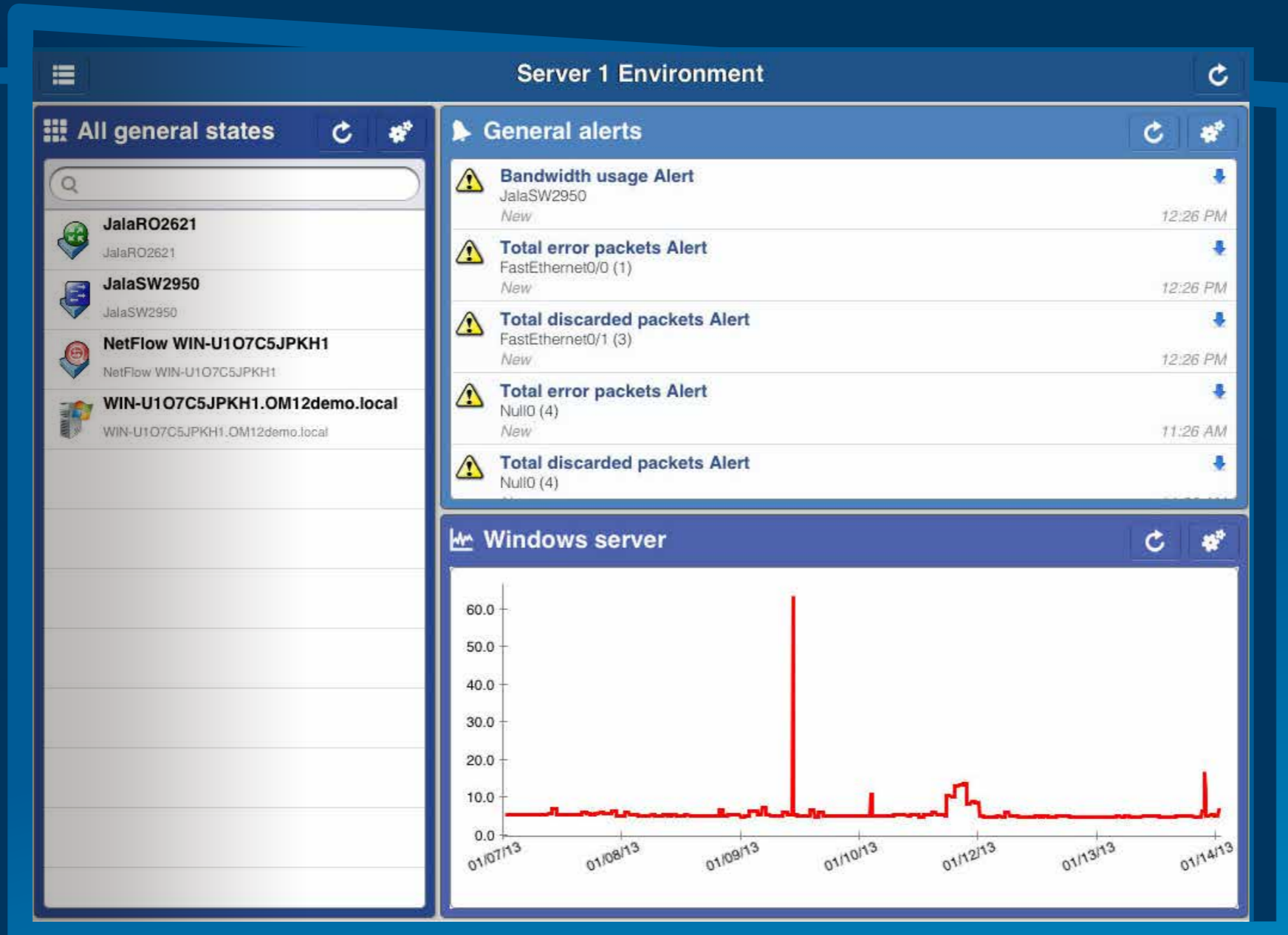
- 2 Insert a State, Alert, Notification, or Performance Graph widget in each section of the dashboard according to what is most important to you.



- 3 Configure each widget with an easy to follow wizard where the most basic and necessary parameters are available for configuration.



- 4 Once you've created and configured all the necessary widgets, data is automatically retrieved from OpsMgr and displayed flawlessly on the dashboard.



- 5 Finally, tap on any object, alert or graph to view detailed information. **Access key OpsMgr environment information on the go and enjoy your time off!**

