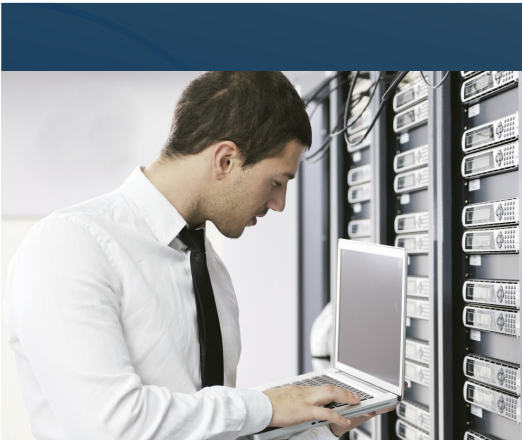


Xian Network Manager

Monitoring your Network with Operations Manager



Features

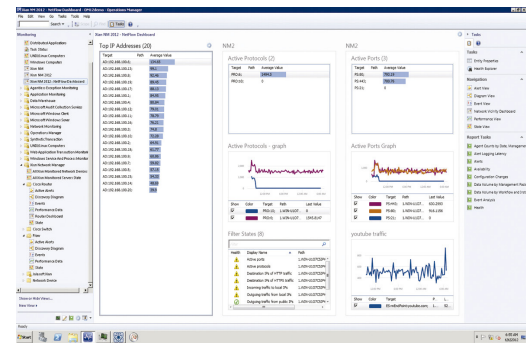
- ▶ Gives you a accurate traffic Analysis through NetFlow and SFlow
- ▶ Monitors the health and performance of a SNMP based evice
- ▶ Smart monitoring by using dynamic thresholds and elements
- ▶ Sends alerts, events, and counters to the OpsMgr environment
- ▶ Topology discovery of the monitored devices

Xian Network Manager 2012 for Microsoft System Center Operations Manager 2007 and 2012 is the tool of choice if you are looking for serious network monitoring. Xian NM 2012 give you control over everything that is happening on your network.

You probably experienced network failures like interfaces that go down or are congested or applications that create sudden traffic storms. Wouldn't it be nice if you were warned as soon as something was about to go haywire? Xian NM 2012 is now fully prepared to help you. The Flow monitoring feature warns you whenever traffic behaves out of the ordinary and need to know the exact reason, so you can be on top of the issue before your users call you. But besides these new additions, Xian NM 2012 also counts with an improved SNMP monitoring system.

Flow

In the past you could only gather information about how much data is passing through your network, but that's as far as you could go. Now, with Xian NM 2012 you really have a clear picture of what traffic is passing through, where it comes from and where it goes to.



You now have more knowledge on which users and applications are running on your network. And let's face it, in the world of public and private clouds we need to keep a close eye on traffic. Performance data, alerts, and reports are available for NetFlow and SFlow in Operations Manager.

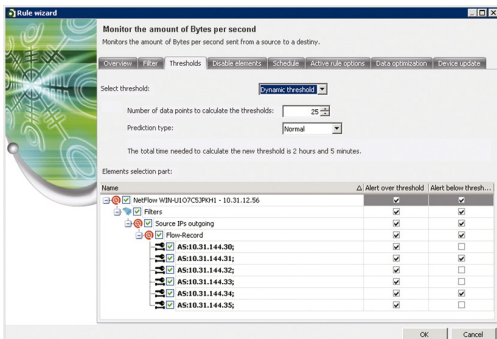
You may like to know who is accessing the SQL Server or simply how much Youtube and Facebook traffic is flowing through your companies network. The Flow feature will unraffle the mystery of why your network suddenly turned so slow.

SNMP Monitoring

Xian NM 2012 already monitors SNMP devices since 2004 and is the best and most robust SNMP network monitoring solution for Operations Manager in the Market. Monitoring of SNMP devices is easy and is just a matter of discovering the device and applying a policy template. Xian NM does the rest with dynamic and automatic thresholds. However, you can easily see what is being monitored, what are the thresholds and modify these accordingly.

Any SNMP device can be monitored by Xian NM 2012 and can be easily enhanced easily using the Custom Rules Feature. Creating new monitoring rules has never been this easy. So you do not need to worry that your investment will not support future devices or specific unique network equipment in the long run.

Dynamic and Automatic thresholds



Monitoring means you need to define thresholds. That is easier said than done. Luckily, in Xian NM 2012 it is almost that easy. Automatic and Dynamic thresholds take over your work and send out alerts whenever values are beyond the acceptable limits.

Of course you still have the option to intervene and set up your manual thresholds, or just use a combination.

Policy templates

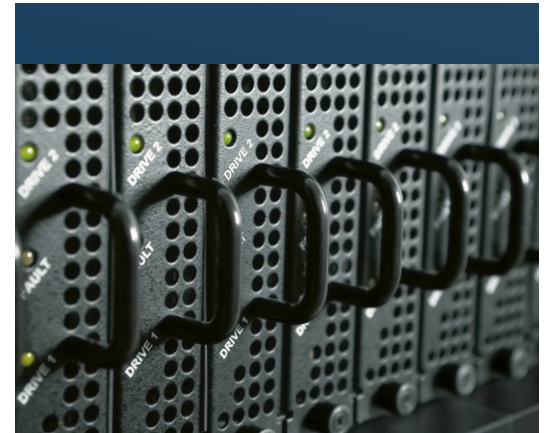
Monitoring a group of devices can be done with policy templates. You need only define your template once and then apply them to all the devices that share the same monitoring policy. On the other hand, you can make multiple policy templates for different groups. A change of a policy template afterwards is automatically propagated to the linked devices.

Easy Topology deployment

Xian NM 2012 discovers your network like no other product does. No matter what devices you have, relationships between switches, routers and Windows Servers are automatically detected, and with Savision Live Maps you can easily draw a topology of your network.

Requirements

- ▶ Windows server 2008 SP1 or higher
- ▶ SQL Server 2008 SP1 or higher
- ▶ .NET Frameworks 3.5 or higher
- ▶ Message queuing 2.0 or higher
- ▶ System Center Operations Manager 2007 R2 or 2012



Xian NM 2012 Supported devices

- ▶ Cisco Systems
 - Routers
 - Switches
 - PIX Firewalls
 - VPN concentrators
 - Wireless
 - ASA
 - Nexus
- ▶ APC UPS
- ▶ Hewlett Packard
- ▶ ProCurve Switches
LaserJet
- ▶ F5 Networks Big IP
- ▶ VMWare Virtual Center/Vcenter
- ▶ Nokia Firewalls
- ▶ Any SNMP device*
- ▶ Availability (ICMP)
- ▶ Flow monitoring (through any device that supports NetFlow or SFlow)

*SNMP devices can be extended with custom rules